

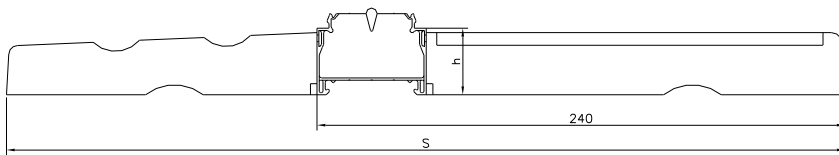
Application:

Thermo-PANEL is an element that fulfils the functions of thermal insulation and window's circumferential seal. Increased stiffness of window frame obtained due to mechanical joint with Thermo-PANEL considerably improves statics of the whole window. Thermo-PANEL is a main element of the STROPEX EMO panel system. Tests in the Building Research Institute confirmed declared performance allowing using it in the energy saving and passive building confirmed in the obtained National Technical Assessment ITB-KOT-2017/0019.

Thermo-PANEL is constructed on the basis of Thermo-PROFILE made of PVC plastics filled with closed-cell rigid polyurethane foam and equipped with dedicated seal. Thermo-PROFILE has moldings on its sides made of rigid PUR foam having thermal insulating properties. An additional component, which is located in the internal molding, is a cladding constituting preliminary finishing of the surface of the window recess.

It is necessary to matt external and internal PUR moldings prior to assembly to ensure adhesion of the foam-adhesive.

Dimensions:



Panel code	Height h [mm]	Width s [mm]	Length d [m]
VA01-PL38	30.0	380.0	1.50; 3.00
AT01-PL38	30.0	380.0	1.50; 3.00
SO01-PL38	30.0	380.0	1.50; 3.00
DX01-PL38	30.0	380.0	1.50; 3.00

Designation and packaging:

Designation and packaging of Thermo-WINDOWSILL			
SYSTEM	PRODUCT CODE	PACKAGING	
		length 1.50 m	length 3.00m
		CARDBOARD BOX	CARDBOARD BOX
		Pcs./m /kg (packaging code)	Pcs. /m (packaging code)
VEKA	VA01-PL38	8 / 12.0 / 30 (VA01-PL38-15-K2)	23 / 69.0 / 180 (VA01-PL38-03-K3)
ALUPLAST	AT01-PL38	8 / 12.0 / 30 (AT01-PL38-15-K2)	23 / 69.0 / 180 (AT01-PL38-03-K3)
SCHUCO	SO01-PL38	8 / 12.0 / 30 (SO01-PL38-15-K2)	23 / 69.0 / 180 (SO01-PL38-03-K3)
DRUTEX	DX01-PL38	8 / 12.0 / 30 (DX01-PL38-15-K2)	23 / 69.0 / 180 (DX01-PL38-03-K3)

Length tolerance for sections 2.00m and 3.00m +/- 10mm;

Properties:

Selected performance based on the National Declaration of Performance no. 01/SL/2016	
Air permeability	a < 0.3 m ³ / (m ² h ² daPa ² /3)
Waterproofness	Class E1200
Wind load resistance	Class C5 (pressure +/- 2000Pa)

- **Crushing strength:** of Thermo-PROFILE constituting a structural component of Thermo-WINDOWSILL equals to 1500 kg/lin.m.,
- **Double stems:** improve durability and allow installation door and window joinery using commercial anchors in accordance with the recommendations of the joinery manufacturers, Building Research Institute instructions or German RAL association
- **Click system:** allows easy, quick and stable pressing to the window frame.
- **Joint tightness:** ensured by special polyurethane seal
- **Materials:** PVC (100% recycling of window and door joinery elements) and closed-cells rigid polyurethane foam, magnesium oxide cladding.
- **Weight:** 2500 g/lin.m.
- **Product approvals and authorizations:** ITB-KOT-2017/0019;

Packaging:

Thermo-PANEL is packed on pallets and secured with protective foil, which protects it against weather conditions. Thermo-PANEL should be stored in places protecting against dirt. Profiles should be stored in locations not exposed to direct sunlight.

Before cutting and installation it is appropriate to ensure storage in a room with a temperature above 15 °C

